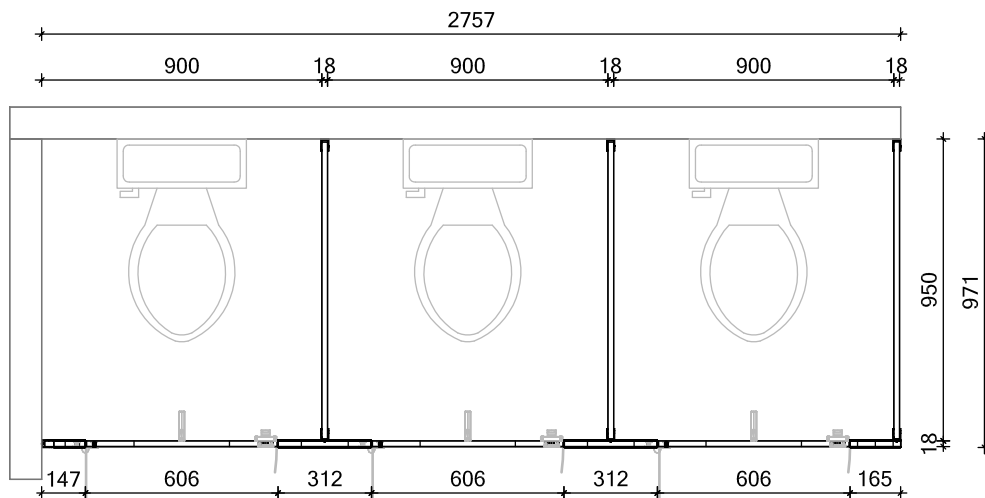
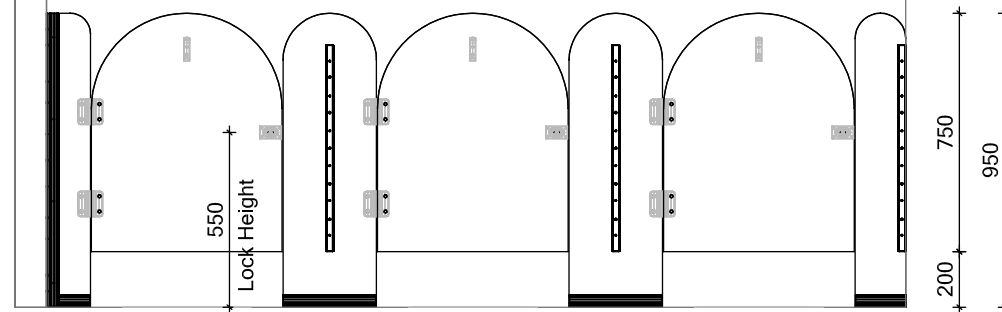


# PRESCHOOL - REDUCED HEIGHT SYSTEM - Using 18mm Structural Board

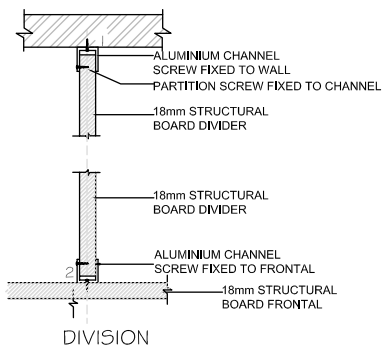


PLAN VIEW

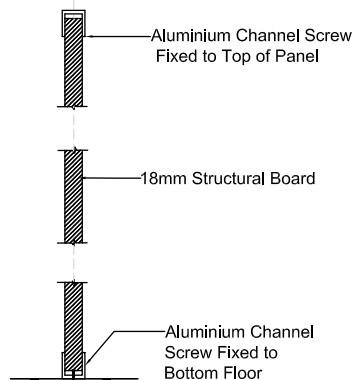
Half - Radius Curve on Tops



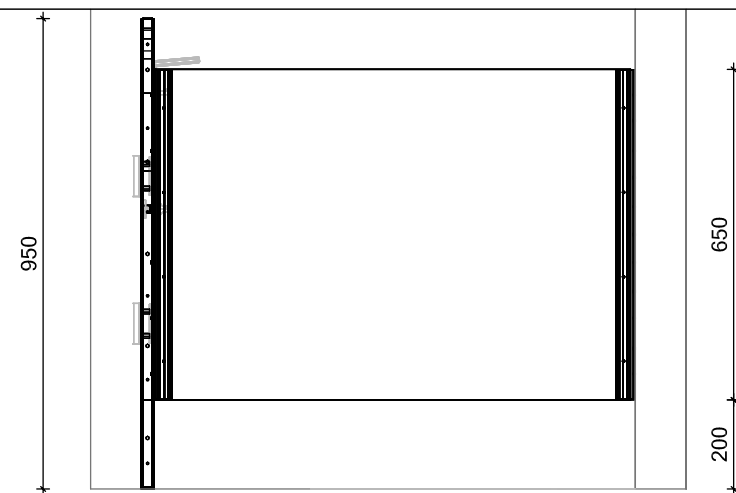
FRONT ELEVATION



RECTANGULAR CROSS SECTION OF ALUMINIUM INSERT



SECTION VIEW OF FRONTAL TO FLOOR



SIDE ELEVATION



## Revisions

Date	Rev.	Description

FLINDERS PARTITION SYSTEM  
PRESCHOOL - REDUCED HEIGHT PARTITION SYSTEM  
18mm STRUCTURAL

JOB NUMBER

Contact	Phone Number
17/05/2019	Fitted to Page
Some I	MONICA

© ABP Group 2016. All Rights Reserved.  
No part of this drawing may be reproduced, copied, modified or adapted, without prior written consent from ABP Group, unless otherwise indicated for stand-alone materials.

13

A3