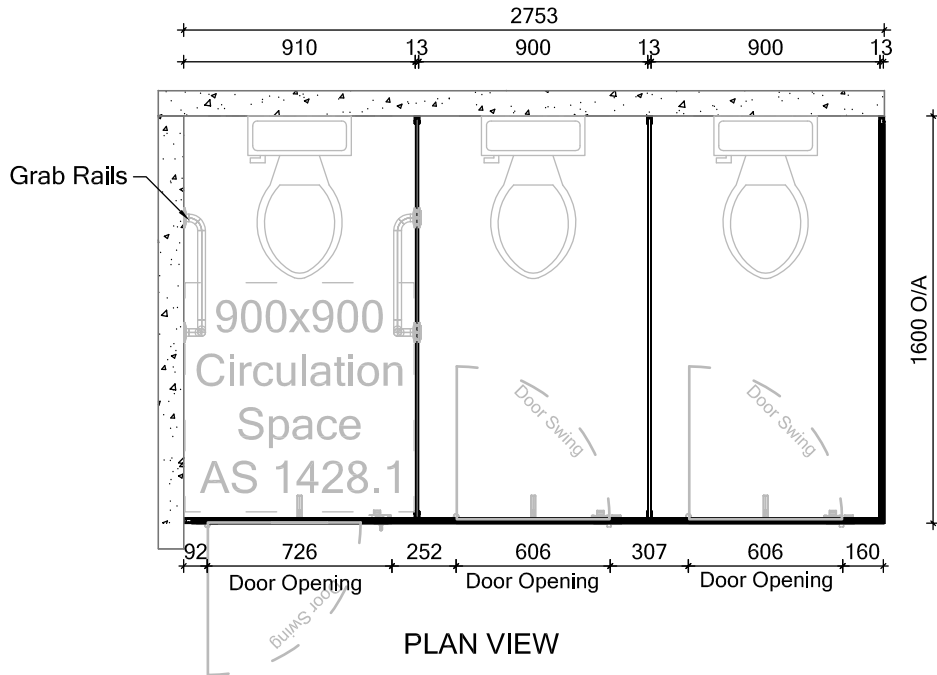
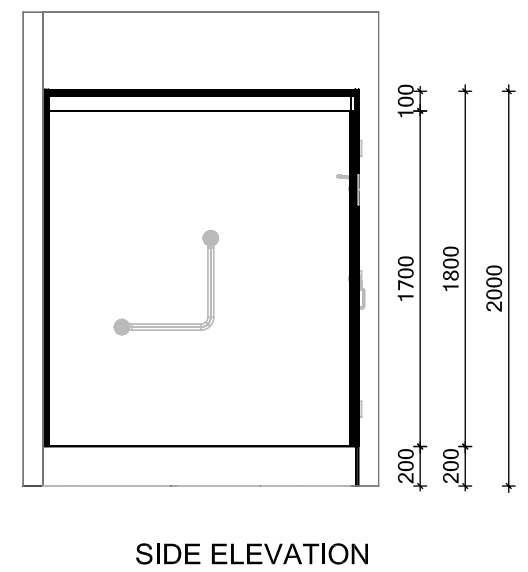
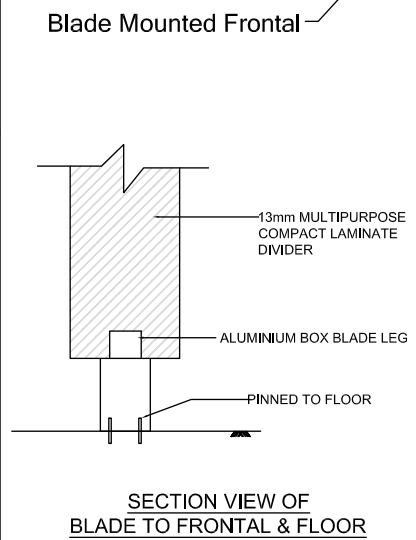
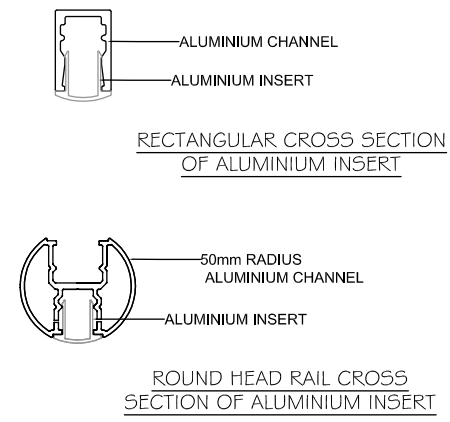
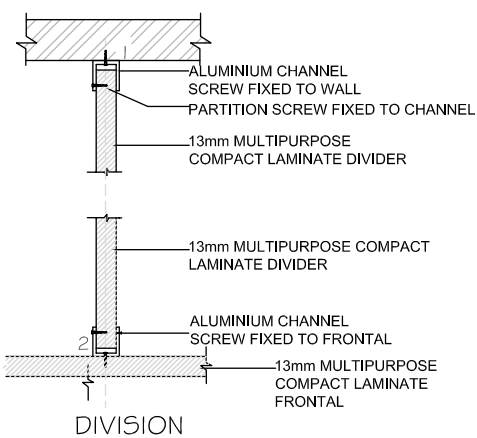
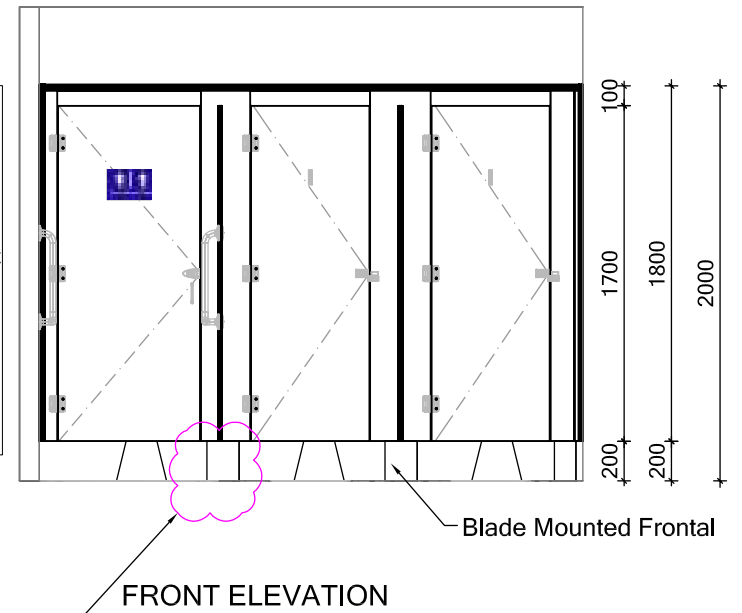


BLADE MOUNTED OVERHEAD BRACE - Using 13mm Compact Laminate



- Unisex Ambulant Signage
- Female Ambulant Signage
- Male Ambulant Signage



Revisions		
Date	Rev.	Description

STURT PARTITION SYSTEM
BLADE MOUNTED OVERHEAD BRAED
13mm COMPACT

JOB NUMBER			
Address			
Contact	Phone Number	© ABP Group 2016. All Rights Reserved. No part of this drawing may be reproduced, copied, modified or adapted, without prior written consent from ABP Group, unless otherwise indicated for stand-alone materials.	
DATE: 01/06/2019	SCALE: Fitted to Page		
Drawn by: Some I	Check by: MONICA		

8
A3