



# Installation Instructions

13mm COMPACT LAMINATE PARTITIONS



Our products are Australian made.  
We encourage your preference for  
buying Australian products to help  
and promote job creation and  
industry development in Australia.

# **DIRECTIONS FOR THE INSTALLATION OF 13mm COMPACT LAMINATE PARTITIONS**

- Overall:**
- (A) General Information**
  - (B) Installing 13mm Compact Laminate Partitions**
  - (C) Fitting Doors**

## **(A) GENERAL INFORMATION:**

- \* Unload crate and place it in close proximity to the job site.
- \* Check crate contents for five (5) separate components:
  - (a) pack of Laminate Panels (there will be different sizes)
  - (b) hardware (hinges, screws, latch etc)
  - (c) aluminium channelling (long lengths may be packed separately from crate)
  - (d) floor plan with cutting list
  - (e) fixings
- \* Unpack, count and separate panel divisions.  
Suggestion: lean panels carefully against a sturdy/rigid wall.
- \* Check and measure installation site to ensure it matches the plans provided.
- \* Set out and mark back wall where divisional panels are to be fitted.
- \* Determine the height of partitions and fix aluminium channel accordingly.  
(NB – Aluminium sizes may vary slightly, so aluminium channels may need to be cut to length.  
Divisional aluminium is predrilled and comes in pairs – big holes (for walls) and small holes (for frontals).

## **(B) INSTALLING 13mm COMPACT LAMINATE PARTITIONS:**

- \* First check that floor level does not vary more than 30mm as stands can only be adjusted between 200-230mm.
- \* Set out back wall for placement of the divisions.
- \* Choose correct division aluminium which comes predrilled and in pairs.  
The big holes are for the walls and the small holes are for the frontal panels.
- \* Fix division aluminium to the back wall making sure frontal panels and nib panels do not vary more than 200-230mm above floor height.
- \* Install divisional panels using chocks or carjacks etc. Pre drill holes with 9/64" drill for 1/2" 8g screws.  
(NB – It is suggested to fasten only one screw in the panel until installation is complete.  
This will allow for necessary adjustment).
- \* Fit Stands onto frontal panel. Holes are pre drilled as to correct position for stands.
- \* Fit small holed aluminium channel to frontal panel using 3/8" 8g screw pre drilling with 1/8" drill.  
Then counter sink slightly. (NB – Depth gauge must be used to avoid drilling through face).
- \* Fix frontal to division keeping divisional level and frontal "plumb". Again use minimal screws until all fronts and nibs are installed.
- \* Once all frontals are installed fit the head channel making sure all frontals are level and plumb and then mark the floor for securing the stands, one frontal at a time.  
(NB – Start in the centre and work outwards. It is best to fix the first frontal to the floor and fix the head by screwing from the top making sure it is plumb and then work across to the nibs).
- \* Use the door spaces (clip ins) to position of the remainder of the frontal panels.
- \* Once all frontal panels are fixed to the floor and screwed from the top, make sure all door spacers are installed. (NB – The nib aluminium is simply positioned on the wall under the head and plumbed down. The side nibs are fitted with one stand).

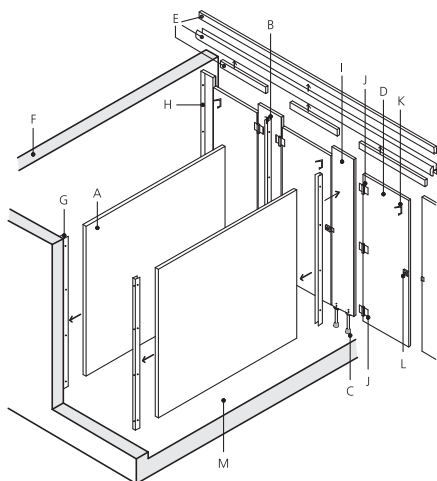
## DIRECTIONS FOR THE INSTALLATION cont.

### (C) FITTING DOORS:

- \* Fit hinge to door.
- \* Fit latch to door (Indicator on opposite side).
- \* Fit coat hook.
- \* To hang the door: Stand door in doorway of cubicle and adjust position and height using spacers and jack.
- \* Use corresponding half-hinge as a template and drill 5mm holes and re drill the holes to 10mm.  
Fit all hinges in this way.
- \* To fit door bumper and catch: Drill the two (2) 5mm holes and then re drill to 10mm.

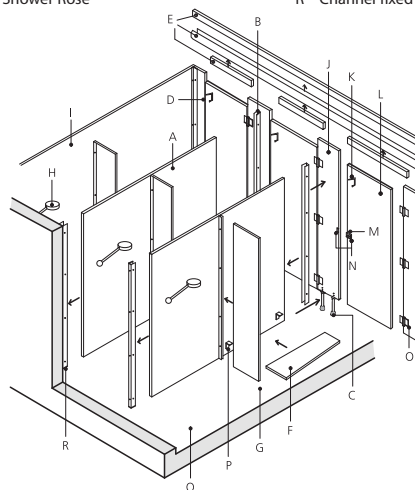
#### Toilet Partitions

- |  |                                 |
|--|---------------------------------|
| A Divisional panel   | G Channel fixed to wall & panel |
| B Channel fixed to frontal & divisional panels                       | H Channel                       |
| C Single foot assembly   | I Frontal panel                 |
| D Door   | J Concealed Gravity Hinge       |
| E Insert Channel with snap-in filler – used in top and over openings | K Coat Hook/Bumper              |
| F Wall   | L Turnbolt & Indicator          |
|  | M Floor                         |

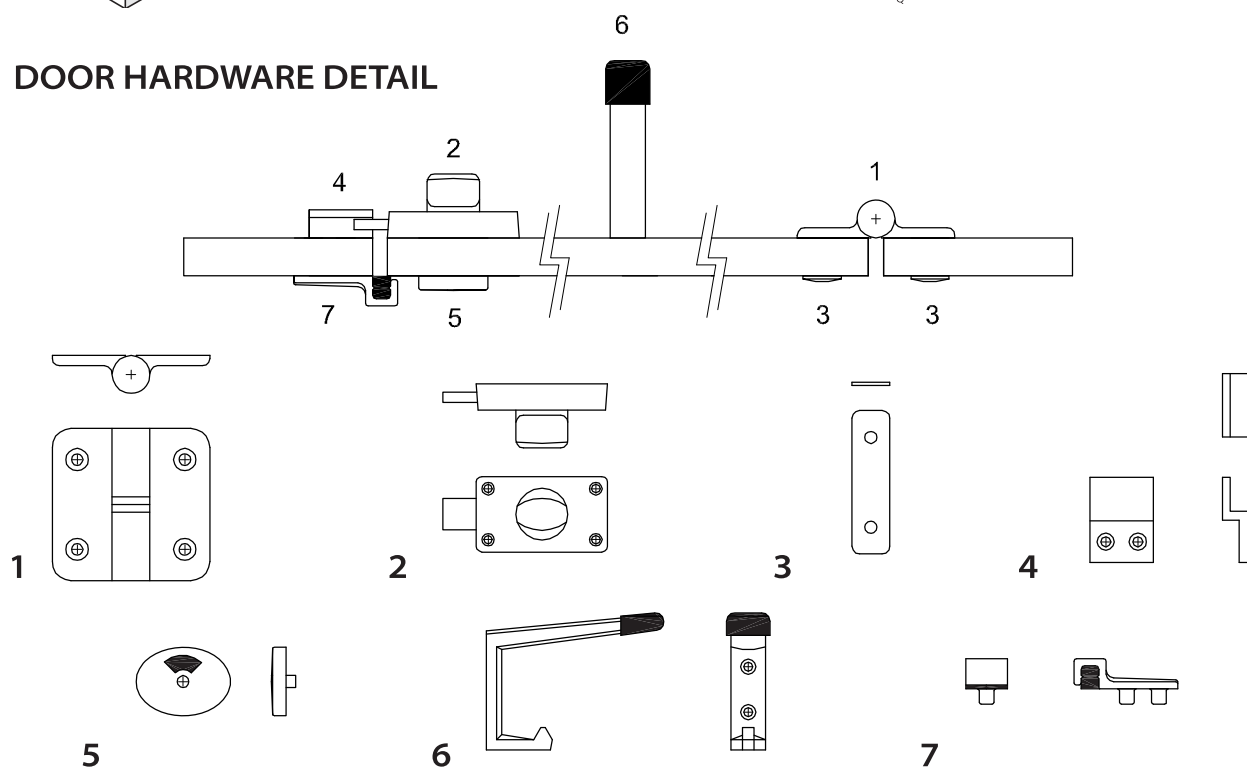


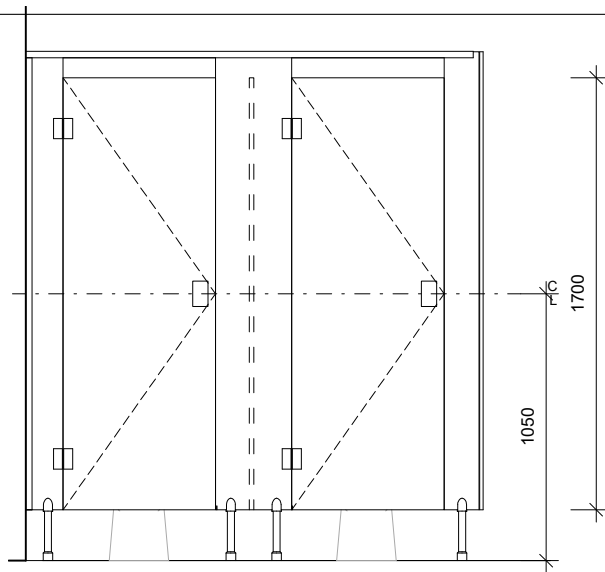
#### Shower Partitions

- |  |                                 |
|--|---------------------------------|
| A Divisional panel   | I Return Panel 1800mm high      |
| B Channel fixed to frontal & divisional panels                       | J Frontal                       |
| C 2 Single foot assembly   | K Coat Hook/Bumper              |
| D Nib  | L Door                          |
| E Insert Channel with snap-in filler – used in top and over openings | M Bumper                        |
| F Shower Seat  | N Turnbolt & Indicator          |
| G Shower Nib   | O Concealed Gravity Hinge       |
| H Shower Rose  | P Angles                        |
|  | Q Floor                         |
|  | R Channel fixed to wall & panel |

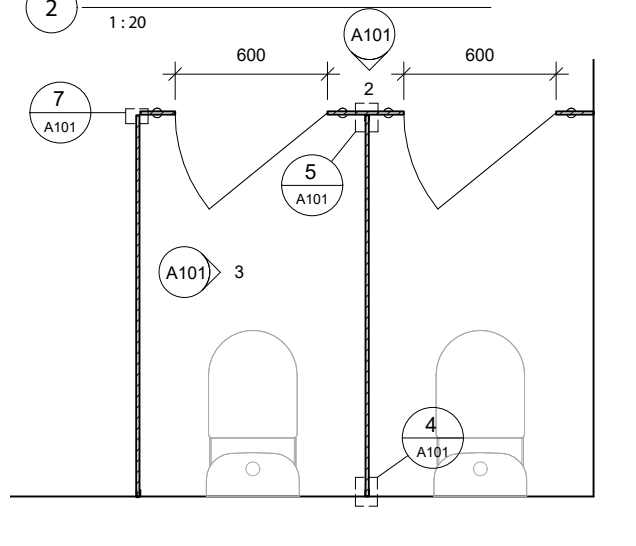


### DOOR HARDWARE DETAIL

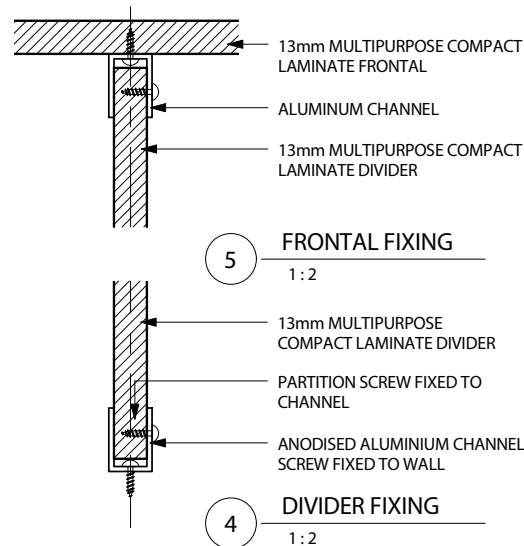




2 ELEVATION 1  
1:20

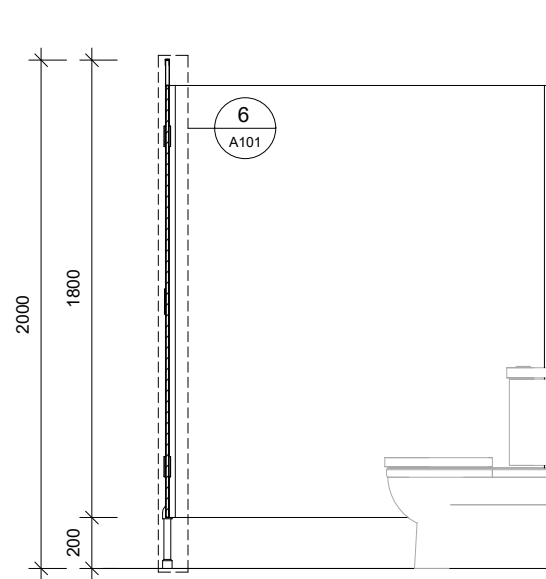


1 PLAN  
1:20

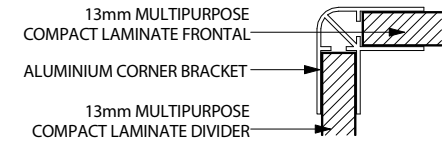


5 FRONTAL FIXING  
1:2

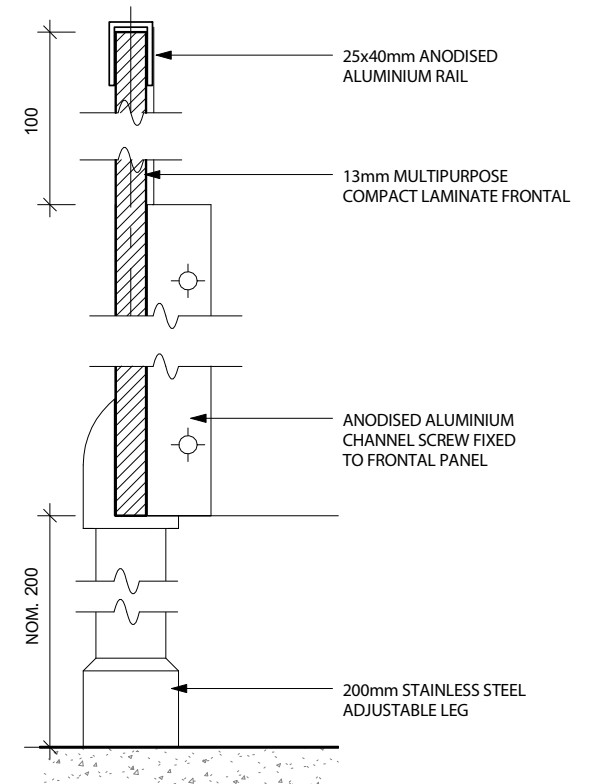
4 DIVIDER FIXING  
1:2



3 ELEVATION 2  
1:20



7 CORNER DETAIL  
1:2



6 FRONTAL SECTION  
1:2



ABP GROUP PTY LTD | 22 MICHIE DRIVE (PO BOX 4391) CARLE PLACE VIC 3207 | PH (07) 3248 9300 FAX (07) 3248 9399  
SALES@ABPGROUP.NET.AU | ABP@ABPGROUP.NET.AU | ABN 91 064 018 060 ACN 064 018 060 QBOC 720439

Typical layout to display fixing  
methods, see floor plan for  
actual layout.

13mm COMPACT LAMINATE

SHEET SIZE: A3

NOT TO SCALE

No.	Description	Date

A101

14/03/2012 8:15:01 PM