



**TOILET PARTITIONS**

[ABPGROUP.NET.AU](http://ABPGROUP.NET.AU)







**LEICHHARDT**  
PMOB - PEDESTAL MOUNTED OVERHEAD BRACED

**FEATURES**

One of the most economical systems available in the range. Designed to minimise wastage and install time

- Constructed using either 18mm Structural MR MDF, 32mm Structural MR MDF or 13mm compact laminate.
- Stainless Steel or Aluminium Legs
- Spring Hinges with Indicator, bumper and coat hook
- Anodized or Powdercoated Aluminium Trims
- Stainless Steel Fixings

**BENEFITS**

- Can be used in areas exposed to hose cleaning e.g shower areas when in 13mm compact laminate
- Reduces maintenance
- Vandal resistant
- Impact resistant surface
- Compact Laminate can be rebated for privacy
- Hardware and Aluminium is available in Clear Anodized or Black as Standard

**APPLICATION**

- Recreational Amenities
- Schools and Universities
- Pubs and Clubs
- End of trip (EOT) facilities
- Shopping Centres
- Sporting and Gym Change Rooms
- Factory toilets
- Ablution blocks
- Corporate office amenities

**DELIVERY AND INSTALLATION**

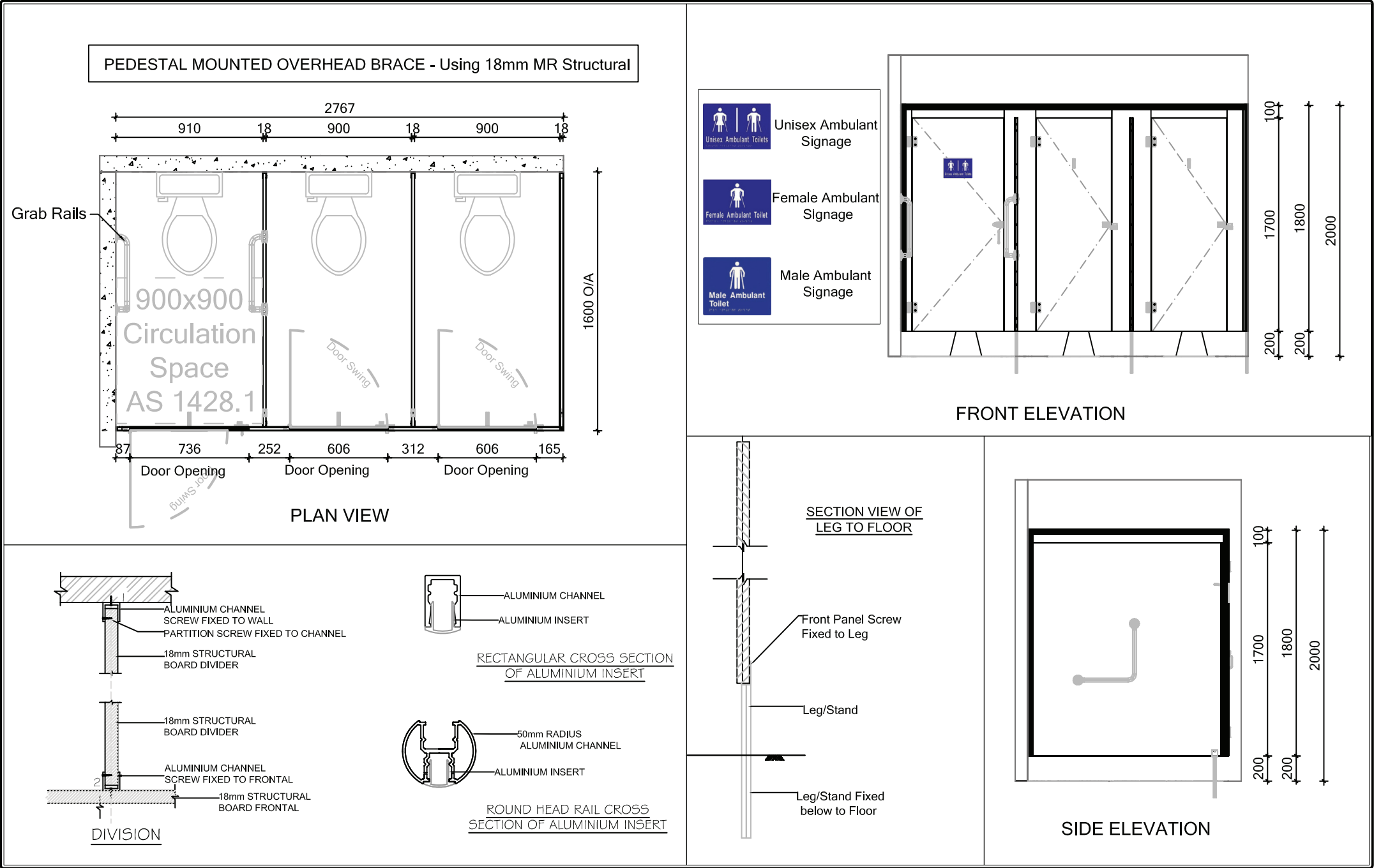
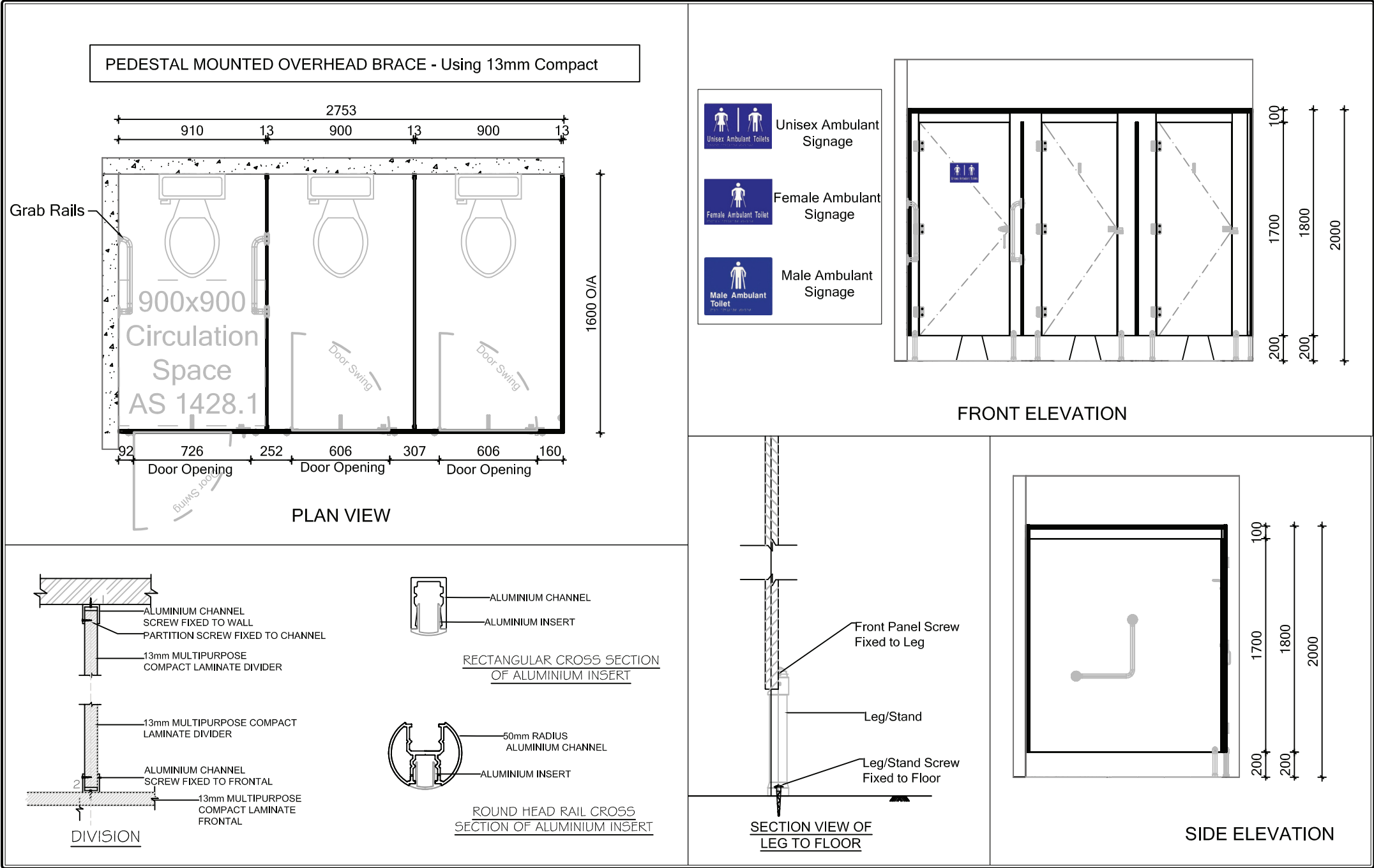
Supply only as a Flat Pack Kit including all fixings Supply and Install by ABP's qualified installers



**HOW TO SPECIFY**

ABP Leichhardt Toilet Partition system in

SUBSTRATE	<input type="text"/>
PARTITION COLOUR	<input type="text"/>
DOOR COLOUR	<input type="text"/>
ALUMINIUM COLOUR	<input type="text"/>
HARDWARE COLOUR	<input type="text"/>





LAWSON  
FMOB - FLOOR MOUNTED OVERHEAD BRACED

FEATURES

- Constructed using 13mm compact laminate.
- Floor Mounted for increased Strength
- Black Core visible on edges
- Ainslie Series cast alloy hardware with concealed stainless steel fixings ( 3 spring hold open hinges per door)
- Anodized or Powdercoated Aluminium Trims
- Overall system height 2000mm AFFL

BENEFITS

- Reduces maintenance
- Vandal resistant
- Impact resistant surface
- Rebated Privacy Strip
- Hardware and Aluminium is available in Clear Anodized or Black as Standard

APPLICATION

- Recreational Amenities
- Schools and Universities
- Pubs and Clubs
- End of trip (EOT) facilities
- Shopping Centres
- Sporting and Gym Change Rooms
- Factory toilets
- Ablution blocks
- Corporate office amenities

DELIVERY AND INSTALLATION

Supply only as a Flat Pack Kit including all fixings Supply and Install by ABP's qualified installers



HOW TO SPECIFY

ABP Lawson Toilet Partition system in

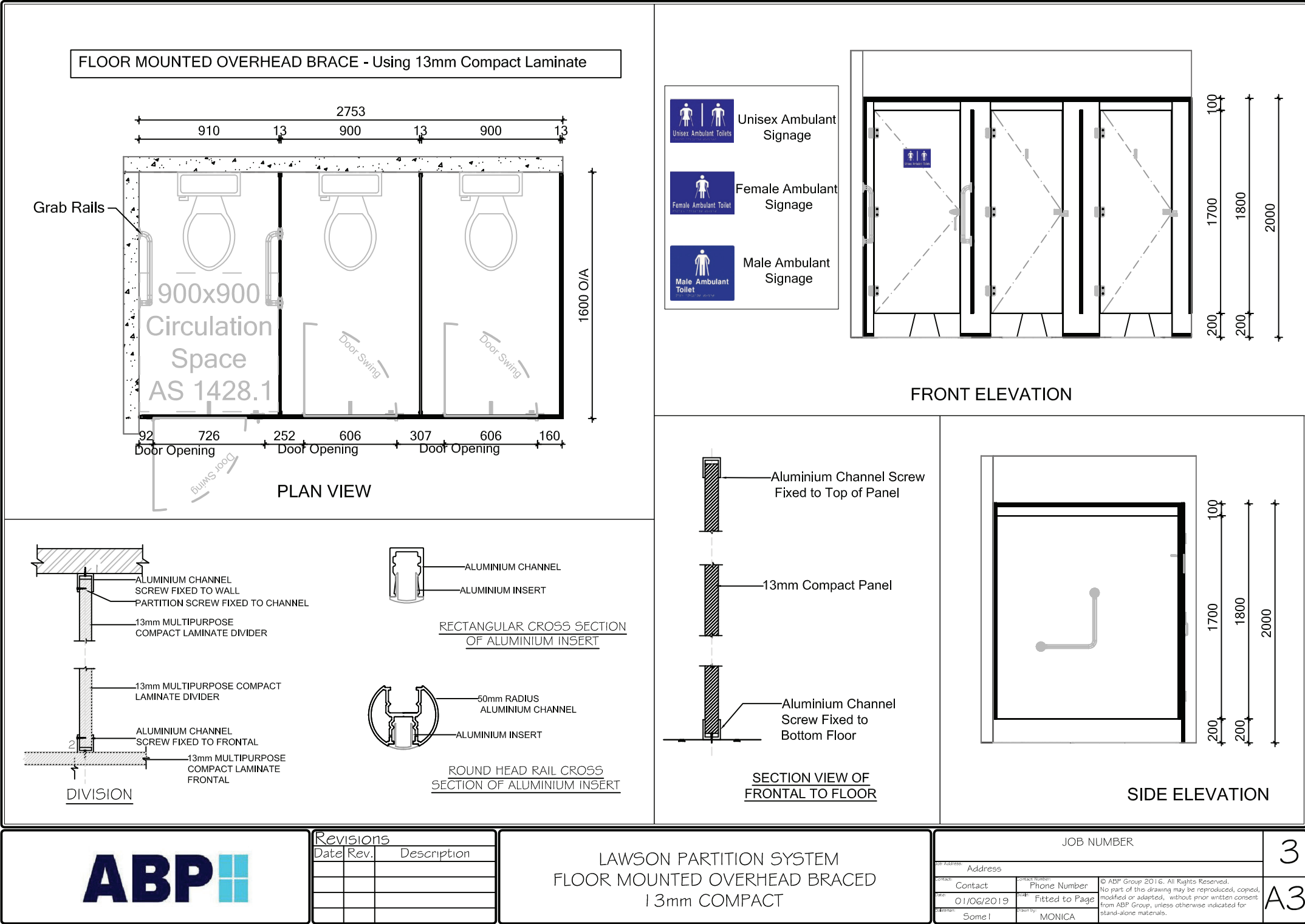
SUBSTRATE

PARTITION COLOUR

DOOR COLOUR

ALUMINIUM COLOUR

HARDWARE COLOUR



OXLEY  
SMOB - SKIRT MOUNTED OVERHEAD BRACE

FEATURES

- Constructed using either 13mm Compact Laminate, 18mm Structural MR MDF, 32mm Structural MR MDF
- Stainless Steel Skirt
- Ainslee Series Spring Hinges with Indicator, bumper and coat hook
- Anodized or Powdercoated Aluminium Trims
- Stainless Steel Fixings

BENEFITS

- Reduces maintenance
- Vandal resistant
- Impact resistant surface
- Hardware and Aluminium is available in Clear Anodized or Black as Standard

APPLICATION

- Recreational Amenities
- Schools and Universities
- Pubs and Clubs
- End of trip (EOT) facilities
- Shopping Centres
- Sporting and Gym Change Rooms
- Factory toilets
- Ablution blocks
- Corporate office amenities

DELIVERY AND INSTALLATION

Supply only as a Flat Pack Kit including all fixings Supply and Install by ABP's qualified installers



HOW TO SPECIFY

ABP Oxley Toilet Partition system in

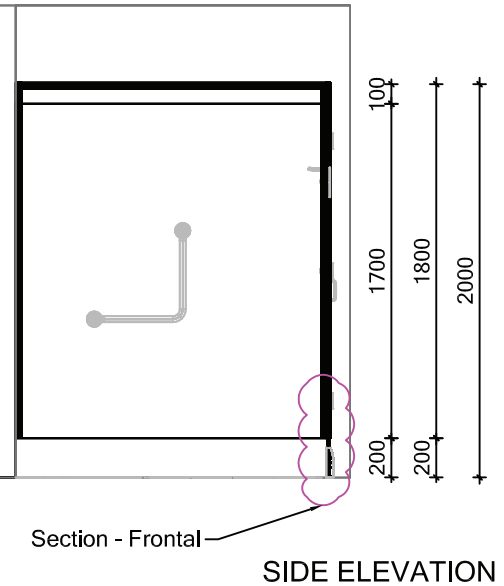
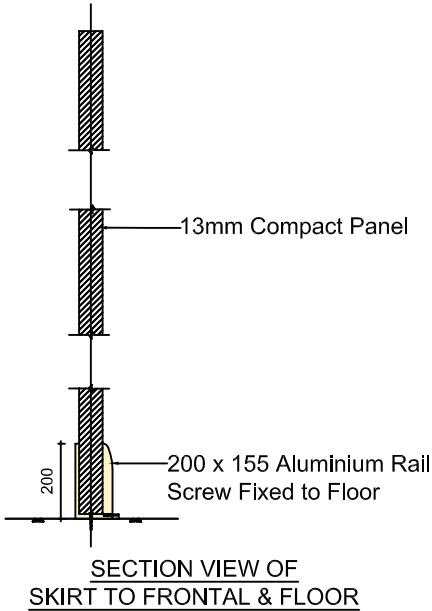
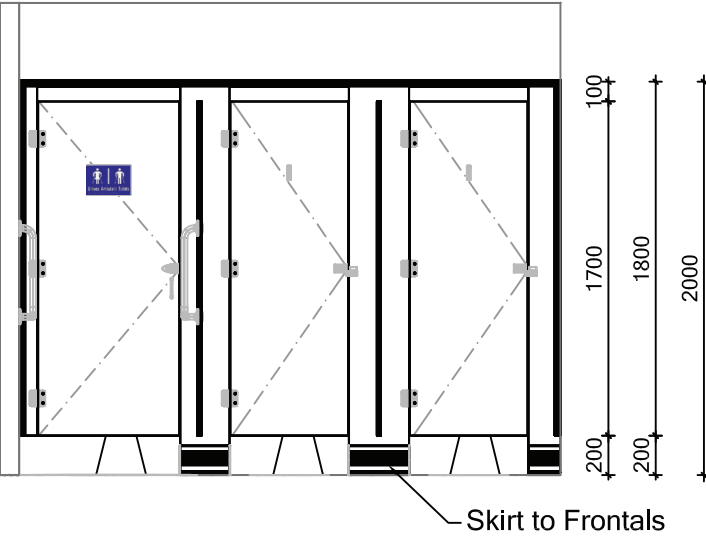
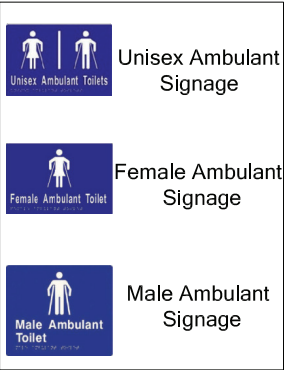
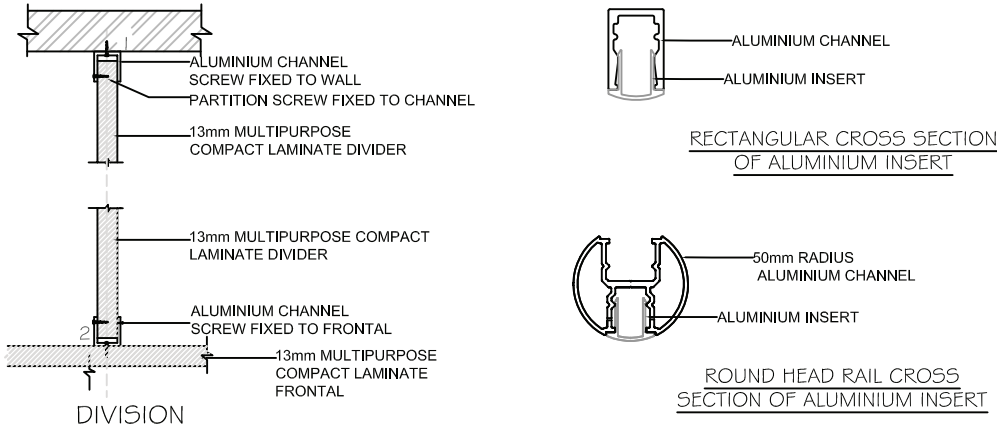
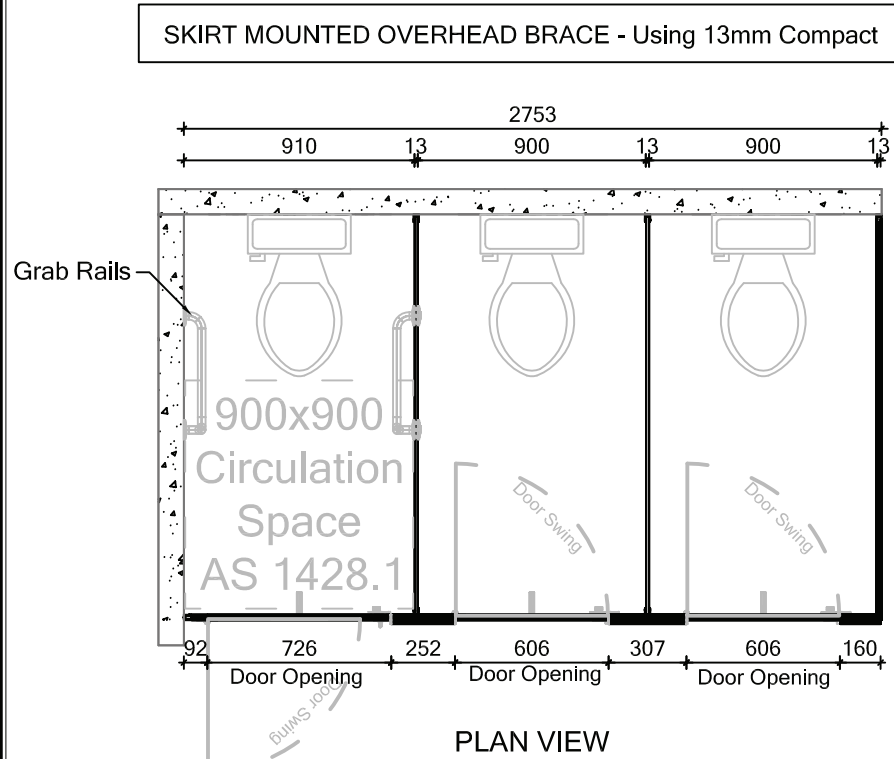
SUBSTRATE

PARTITION COLOUR

DOOR COLOUR

ALUMINIUM COLOUR

HARDWARE COLOUR



Revisions		
Date	Rev.	Description

OXLEY PARTITION SYSTEM  
SKIRT MOUNTED OVERHEAD BRACED  
13mm COMPACT

JOB NUMBER		
Address	Contact	Phone Number
01/06/2019	Fitted to Page	MONICA

4  
A3

WENTWORTH  
F2C – FLOOR TO CEILING

FEATURES

- Constructed using 13mm compact laminate.
- Floor Mounted for increased Strength
- Black Core visible on edges
- Ainslie Series cast alloy hardware with concealed stainless steel fixings ( 3 spring hold open hinges per door)
- Anodized or Powdercoated Aluminium Trims
- Overall system height 2000mm AFFL

BENEFITS

- Reduces maintenance
- Vandal resistant
- Impact resistant surface
- Rebated Privacy Strip
- Hardware and Aluminium is available in Clear Anodized or Black as Standard

APPLICATION

- Recreational Amenities
- Schools and Universities
- Pubs and Clubs
- End of trip (EOT) facilities
- Shopping Centres
- Sporting and Gym Change Rooms
- Factory toilets
- Ablution blocks
- Corporate office amenities

DELIVERY AND INSTALLATION

Supply only as a Flat Pack Kit including all fixings Supply and Install by ABP's qualified installers



HOW TO SPECIFY

ABP Wentworth Toilet Partition system in

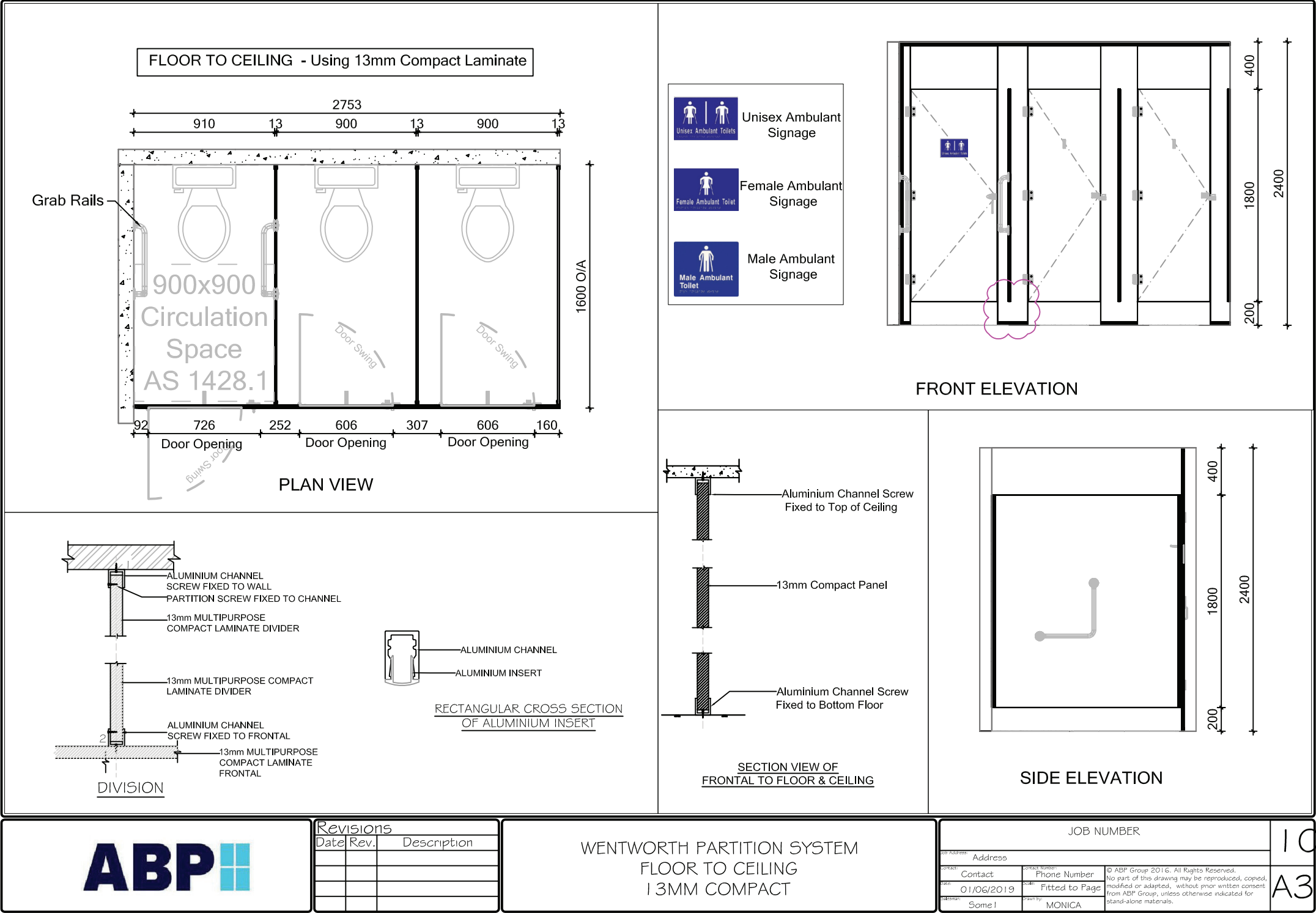
SUBSTRATE

PARTITION COLOUR

DOOR COLOUR

ALUMINIUM COLOUR

HARDWARE COLOUR





BLAXLAND  
FLOOR TO CEILING DEET SPECIFICATION

FEATURES

- Constructed using 13mm compact laminate.
- Floor Mounted for increased Strength
- Black Core visible on edges
- Ainslie Series cast alloy hardware with concealed stainless steel fixings ( 3 spring hold open hinges per door)
- 

BENEFITS

- Reduces maintenance
- Vandal resistant
- Impact resistant surface
- Rebated Privacy Strip
- Hardware and Aluminium is available in Clear Anodized or Black as Standard

APPLICATION

- Unisex Recreational Amenities
- Schools and Universities
- Unisex Sporting and Gym Change Rooms

DELIVERY AND INSTALLATION

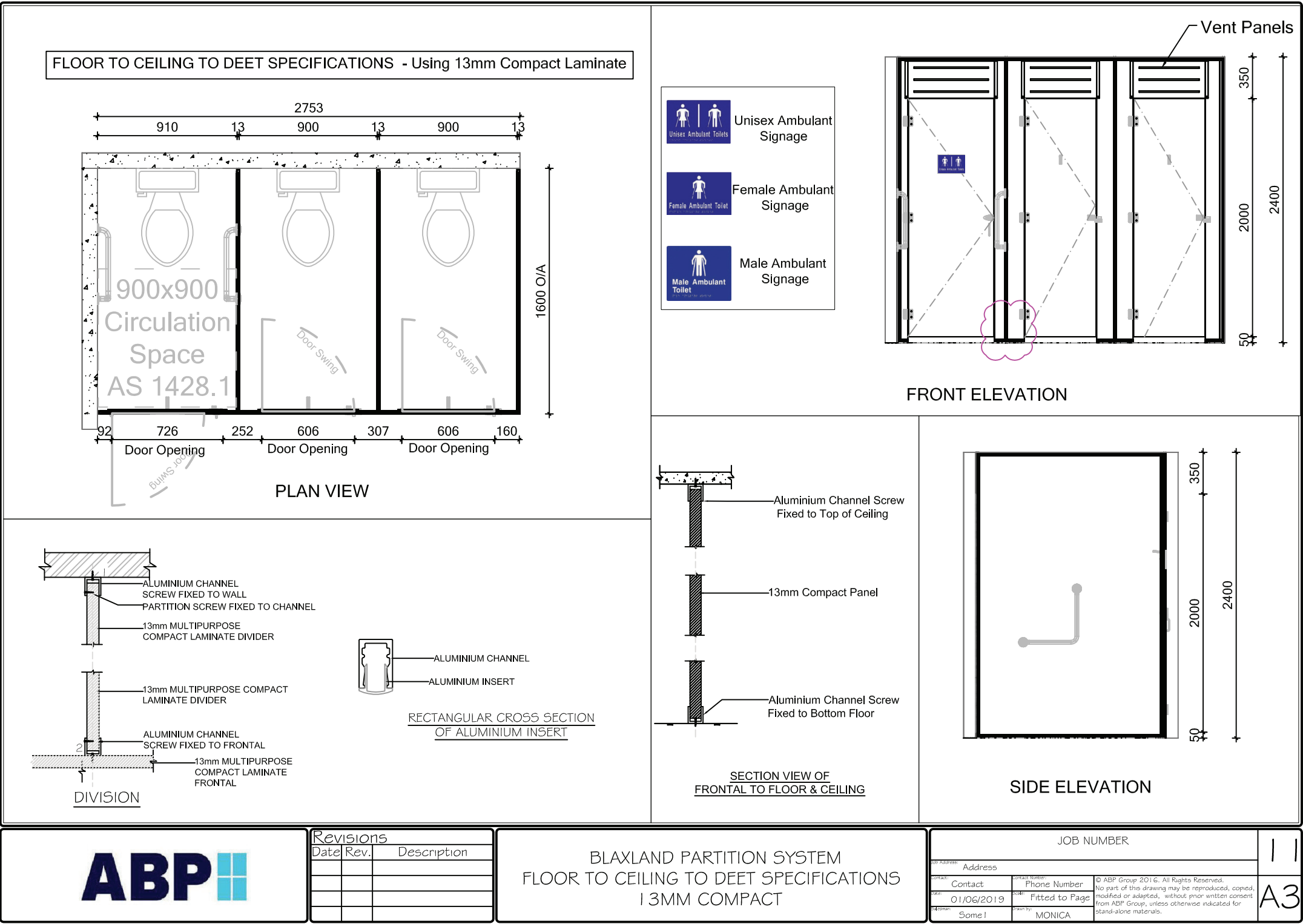
Supply only as a Flat Pack Kit including all fixings Supply and Install by ABP's qualified installers



HOW TO SPECIFY

ABP Blaxland Toilet Partition system in

SUBSTRATE	
PARTITION COLOUR	
DOOR COLOUR	
ALUMINIUM COLOUR	
HARDWARE COLOUR	



STURT  
BMOB – BLADE MOUNTED OVERHEAD BRACED

FEATURES

- 13 mm Compact Laminate
- 18 mm Structural MR MDF
- 32 mm Structural MR MDFL
- Aluminium Blade as Partition Support
- Ainslie Series Spring Hinges with Indicator, bumper and coat hook
- Anodized or Powdercoated Aluminium Trims
- Stainless Steel Fixings

BENEFITS

- Reduces maintenance
- Vandal resistant
- Impact resistant surface
- Rebated Privacy Strip
- Hardware and Aluminium is available in Clear Anodized or Black as Standard

APPLICATION

- Recreational Amenities
- Schools and Universities
- Pubs and Clubs
- End of trip (EOT) facilities
- Shopping Centres
- Sporting and Gym Change Rooms
- Factory toilets
- Ablution blocks
- Corporate office amenities

DELIVERY AND INSTALLATION

Supply only as a Flat Pack Kit including all fixings Supply and Install by ABP's qualified installers



HOW TO SPECIFY

ABP Sturt Toilet Partition System in

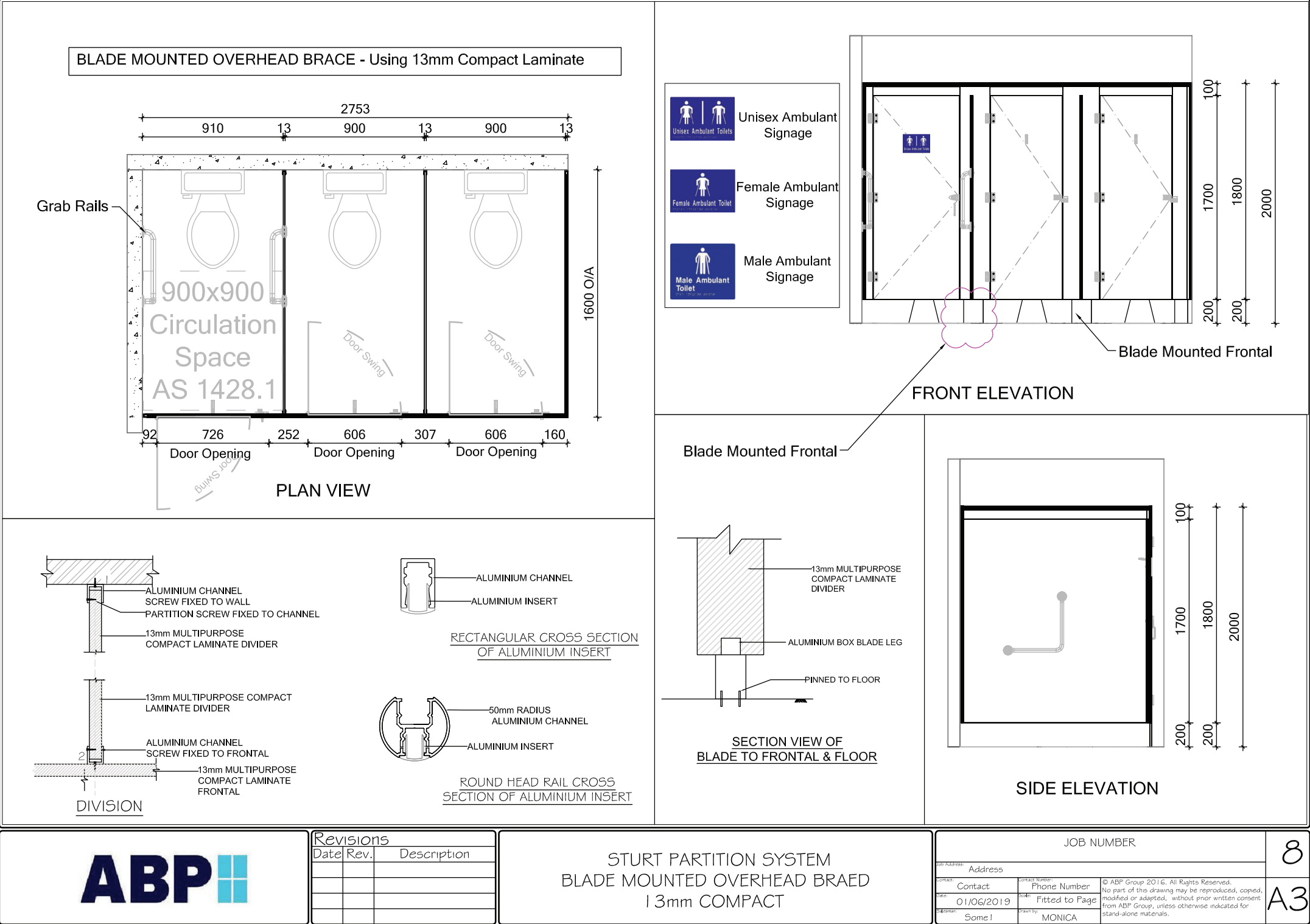
SUBSTRATE

PARTITION COLOUR

DOOR COLOUR

ALUMINIUM COLOUR

HARDWARE COLOUR







FLINDERS  
PRESCHOOL – REDUCED HEIGHT PARTITION SYSTEM

FEATURES

- 13mm Compact Laminate
- 18mm Structural MR MDF
- 32mm Structural MR MDF
- Black Core visible on edges
- Spring Hinges with Indicator, bumper and coat hook
- Anodized or Powdercoated Aluminium Trims
- Stainless Steel Fixings

BENEFITS

- Reduces maintenance
- Vandal resistant
- Impact resistant surface
- Hardware and Aluminium is available in Clear Anodized or Black as Standard

APPLICATION

- Preschools and Childcare Centres

DELIVERY AND INSTALLATION

Supply only as a Flat Pack Kit including all fixings Supply and Install by ABP's qualified installers

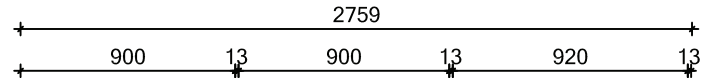


HOW TO SPECIFY

ABP Flinders Partition system in

SUBSTRATE	
PARTITION COLOUR	
DOOR COLOUR	
ALUMINIUM COLOUR	
HARDWARE COLOUR	

PRESCHOOL - REDUCED HEIGHT SYSTEM - Using 13mm Compact panel

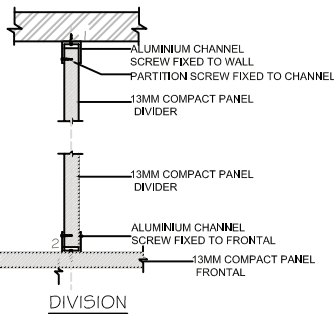


PLAN VIEW

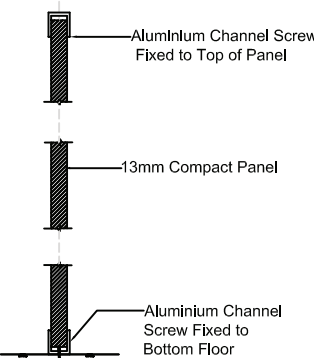
20mm Radius Corners to Top



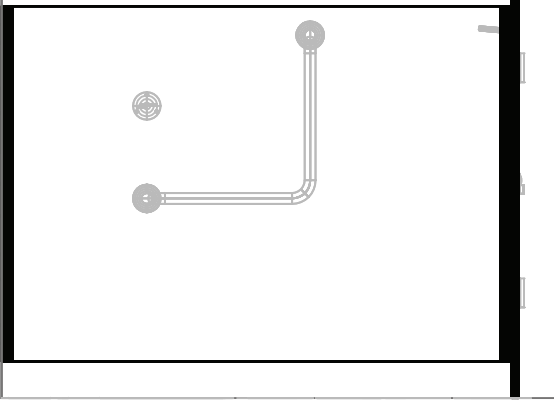
FRONT ELEVATION



RECTANGULAR CROSS SECTION OF ALUMINIUM INSERT



SECTION VIEW OF  
FRONTAL TO FLOOR



SIDE ELEVATION



Revisions

Date	Rev.	Description

FLINDERS PARTITION SYSTEM  
PRESCHOOL - REDUCED HEIGHT PARTITION SYSTEM  
13mm COMPACT PANEL

JOB NUMBER			
Address			
Contact	Phone Number	© ABP Group 2016. All Rights Reserved. No part of this drawing may be reproduced, copied, modified or adapted, without prior written consent from ABP Group, unless otherwise indicated for stand-alone materials.	
23/11/2018	Fitted to Page		
Some I	MONICA		



**ABP** 

PH (07) 3248 5500 FAX (07) 3248 5599  
12 MICA ST (PO BOX 197) CAROLE PARK Q 4300  
SALES@ABPGROUP.NET.AU  
WWW.ABPGROUP.NET.AU

